



01/23/2025
GOCO Concept Paper

Re: City of Creede – Parks, Recreation, Open Space and Trails Plan

Purpose

The City of Creede, a Colorado Town, seeks to develop its first ever Parks, Recreation, Open Space and Trails Master Plan (“Plan”) with the help of Great Outdoors Colorado (“GOCO”). This Plan is urgently needed to facilitate much-needed improvements to the community’s indoor and outdoor recreational amenities and provide safe connections for pedestrians and bicycles throughout Town.

The Plan will advance GOCO’s program values by enhancing community vitality, equitable access, and youth connections. Creede’s primary goal for Plan development is to boost **community vitality** through thoughtfully planned trail connections, improved pedestrian and bicycle safety, enhanced outdoor spaces for play and gathering, and continued expansion of recreation programming serving the City’s residents, guests and broader Mineral County region.

Currently, there is a lack of pedestrian and bicycle connectivity throughout Town, with no existing sidewalks or trails. The Town’s existing parks are outdated and in need of update and repair, and the Town’ recreation center, which serves the Town and surrounding Mineral County residents and visitors, is in dire need of renovation and repairs.

Initial community outreach, including a community survey, was conducted prior to submitting this concept paper and indicates that additional indoor programming at the recreation center and trails are the highest priorities for respondents, with emphasis on the need for fitness classes and environmental education programs. The Plan will support development of these and additional outdoor recreation facilities and programs, building on Creede’s history and natural beauty, to support the community’s recreational needs and improve quality of life.

Creede’s Demographic Profile

Understanding a community’s characteristics is important when making informed decisions – locally, regionally and state-wide. While Creede has a full-time population of only 258 residents, it is an economic hub for Mineral County with an estimated 224 in-commuters. The Town is the home to the County seat, City Hall and an established Main Street. In-commuters nearly double the Town’s population and are beneficial for the overall economy, depicting the reliance on the broader region for housing supply and importance of local infrastructure.

The full-time population of Mineral County is only about 800 people, but summer visitors substantially increase the seasonal population to approximately 5,000. Within Creede’s city limits, there are currently 253 housing units, 146 of which are occupied full time. This reflects a 42% vacancy rate, with a large number of units that are used seasonally or as short-term rentals. The high number of vacant units indicates that the City’s population fluctuates when all homes are occupied and increases the need for local services and parks and recreation facilities. This statistic makes sense given that over 60% of the jobs in Mineral County are tourism based.

Creede is a popular destination in the summer months due to its access to public lands, heritage tourism, and the Rio Grande River. In the winter months visitation is influenced by proximity to Wolf Creek Ski area. Creede’s highest sales tax revenue months are typically Memorial Day to Labor Day. The increased population in the summer months will be considered in the Plan, contributing significantly to the urgent need for an improved public parks system and trail connections.

The State of Colorado Department of Local Affairs Demographic Profile for City of Creede published November 2022 is the source for this information.



History and Culture

Creede's history is marked by a silver boom, mining, access to the outdoors and a resilient population. Creede was originally occupied by a variety of Native American tribes, who recognized the mountain formations in the Wheeler Geologic Area as spiritually significant. Access to the Rio Grande River also made the area favorable for nomadic tribes to camp during the summer months for hunting and fishing. Today, Creede is a mining tourist City with many sites to see, including the Days of '92 event at Basham Park, Creede Historical Society Museum and the Creede Underground Mining Museum. Creede is also well known for its Repertory Theater, which attracts international visitors to the community, and for the ample outdoor recreation opportunities available on surrounding public lands.

Existing Parks, Trails and Facilities

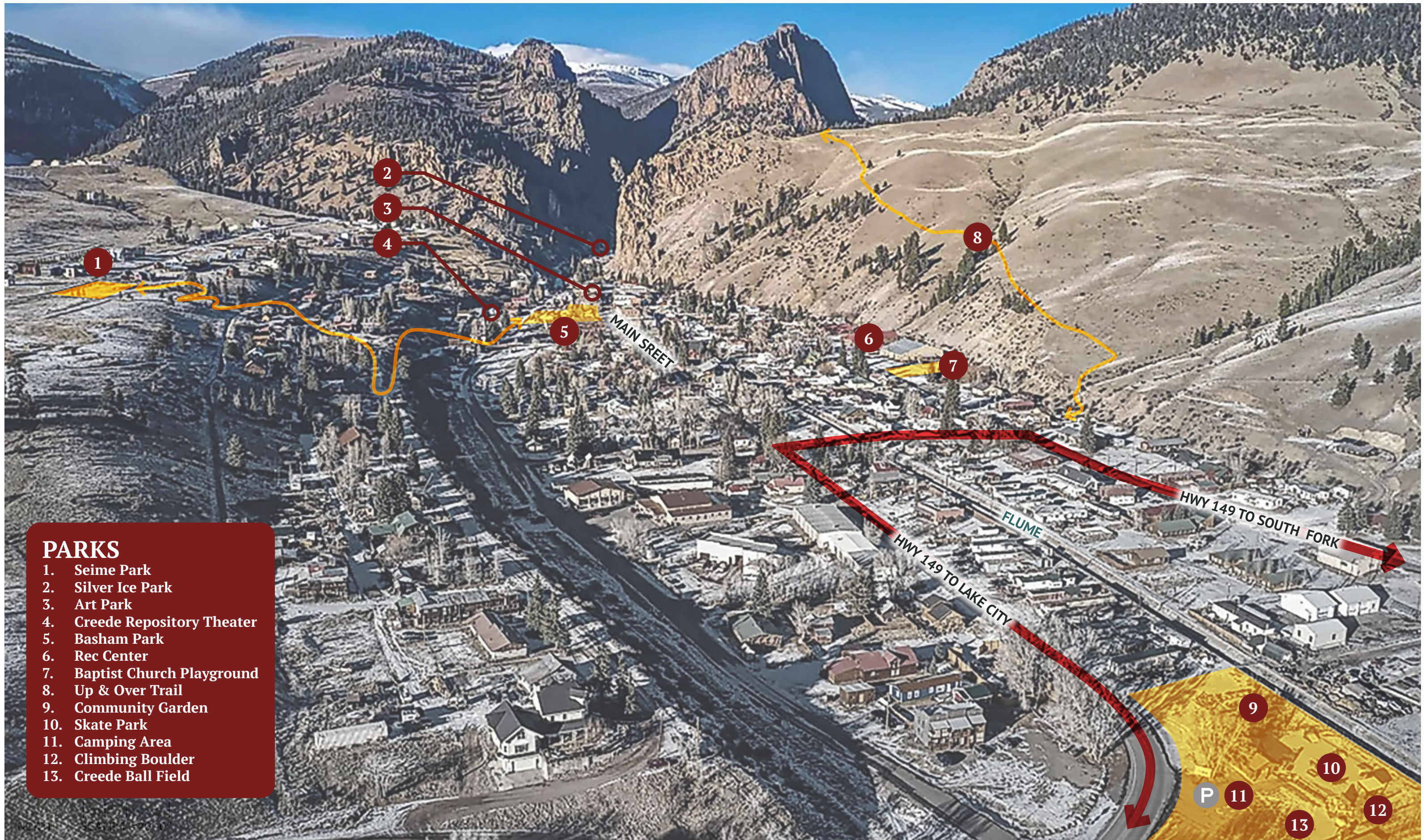
In preparation for the GOCO grant submittal the team has prepared a detailed inventory and assessment of the parks and facilities conditions. The city currently maintains the following parks and facilities:

- Basham Park (downtown park with restrooms, Veteran's memorial, Days of '92, gazebo)
- Hargreaves Park (ball field, skate park, community garden, restrooms, camping)
- Seime Park (multi-use lawn)
- Silver Ice Park (ice skating pond)
- Virginia Christensen Multi Use Facility (old school property with gym and community rooms)
- Up and Over Trail (accessed from 5th and LaGarita)

The limited City staff does their best to maintain each of the parks and facilities, but each needs improvement. Per the outreach effort, the community finds that recreation programs need to be expanded, parks need improvements, and that there is an overall lack of connectivity throughout Town. During the proposed Plan development, trail improvements will be considered that would require potential partnerships with USFS and Mineral County and create safe routes to the community school, which is located south of the city limits in Mineral County.

Planning and Capacity Grant

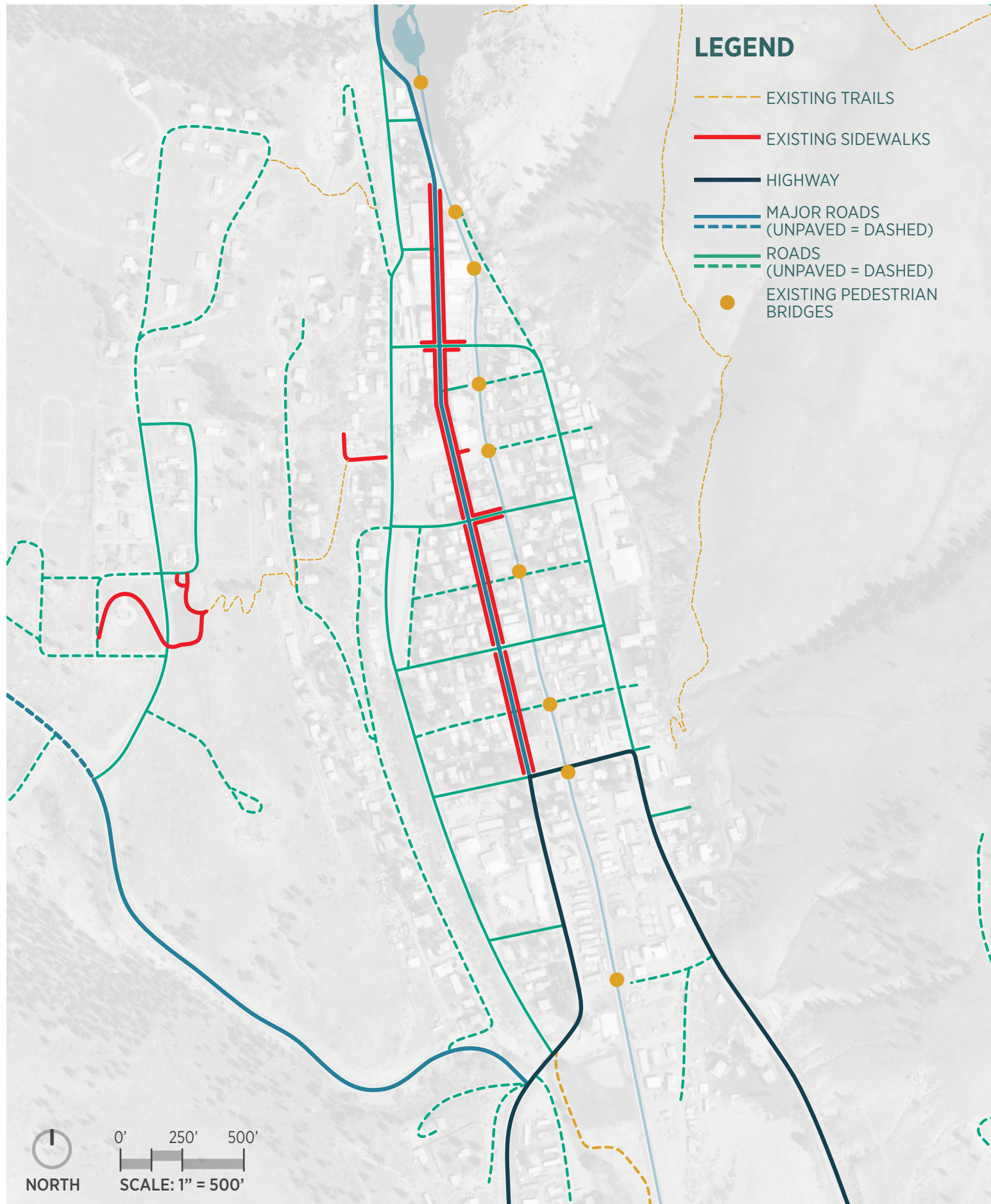
Creede's primary goal for Plan development is to boost *community vitality* through thoughtfully planned trail connections, improved pedestrian and bicycle safety, enhanced outdoor spaces for play and gathering, and continued expansion of recreation programming serving the City's residents, guests and broader Mineral County region. The City is seeking a Planning and Capacity grant to develop a strategic master plan that guides future investment in the Virginia Christensen Multi Use Facility, parks and currently disconnected trail system. The city is requesting \$200,000 for the planning and design budget (City providing a 20% match) for development of the Plan, which will require an architect, landscape architect and planner. The Plan will boost community vitality, providing a strategic roadmap to meet the community needs and priorities identified during the initial community engagement efforts.



PARKS

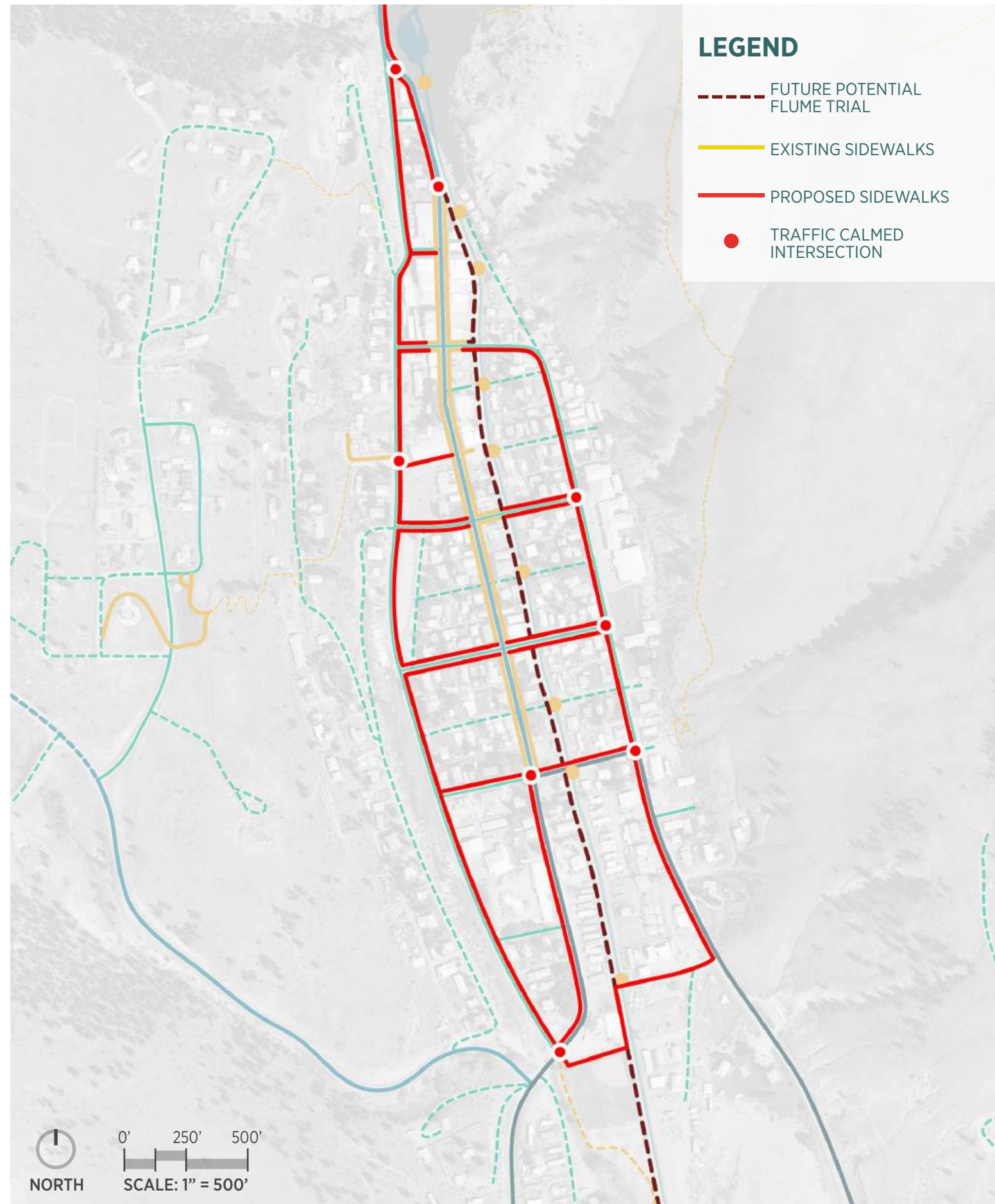
1. Seime Park
2. Silver Ice Park
3. Art Park
4. Creede Repository Theater
5. Basham Park
6. Rec Center
7. Baptist Church Playground
8. Up & Over Trail
9. Community Garden
10. Skate Park
11. Camping Area
12. Climbing Boulder
13. Creede Ball Field

P



CREEDE PARKS & RECREATION | EXISTING CONNECTIONS

01/23/2025



PROPOSED CONNECTIONS

PARK NUMBERS:

AREA ~64,000 SQFT
PARKING 24+/- LOT



EXISTING PARK AMENITIES

- A** VIRGINIA CHRISTENSEN RECREATION CENTER
- B** BAPTIST CHURCH PLAYGROUND & PARKING
- C** UP & OVER TRAILHEAD & PARKING
- D** PROGRAMMED CLASSES
- E** RESTROOMS

INSPIRATION NEEDS



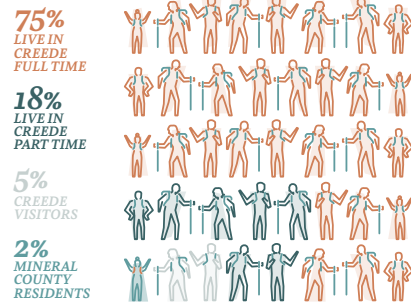
PARK NEEDS

- 1** INCREASED WALKABILITY
- 2** SHELTERS/SHADE
- 3** ADDITIONAL PLAYGROUND SPACE AND FEATURES
- 4** OUTDOOR PROGRAM SPACE
- 5** ADULT CLASSES
- 6** GREEN SPACE

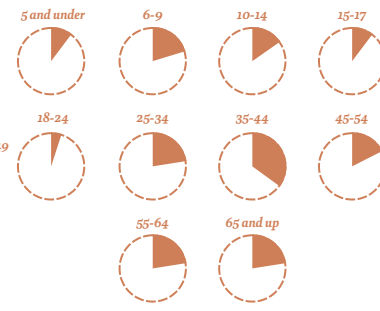


Who took our survey?

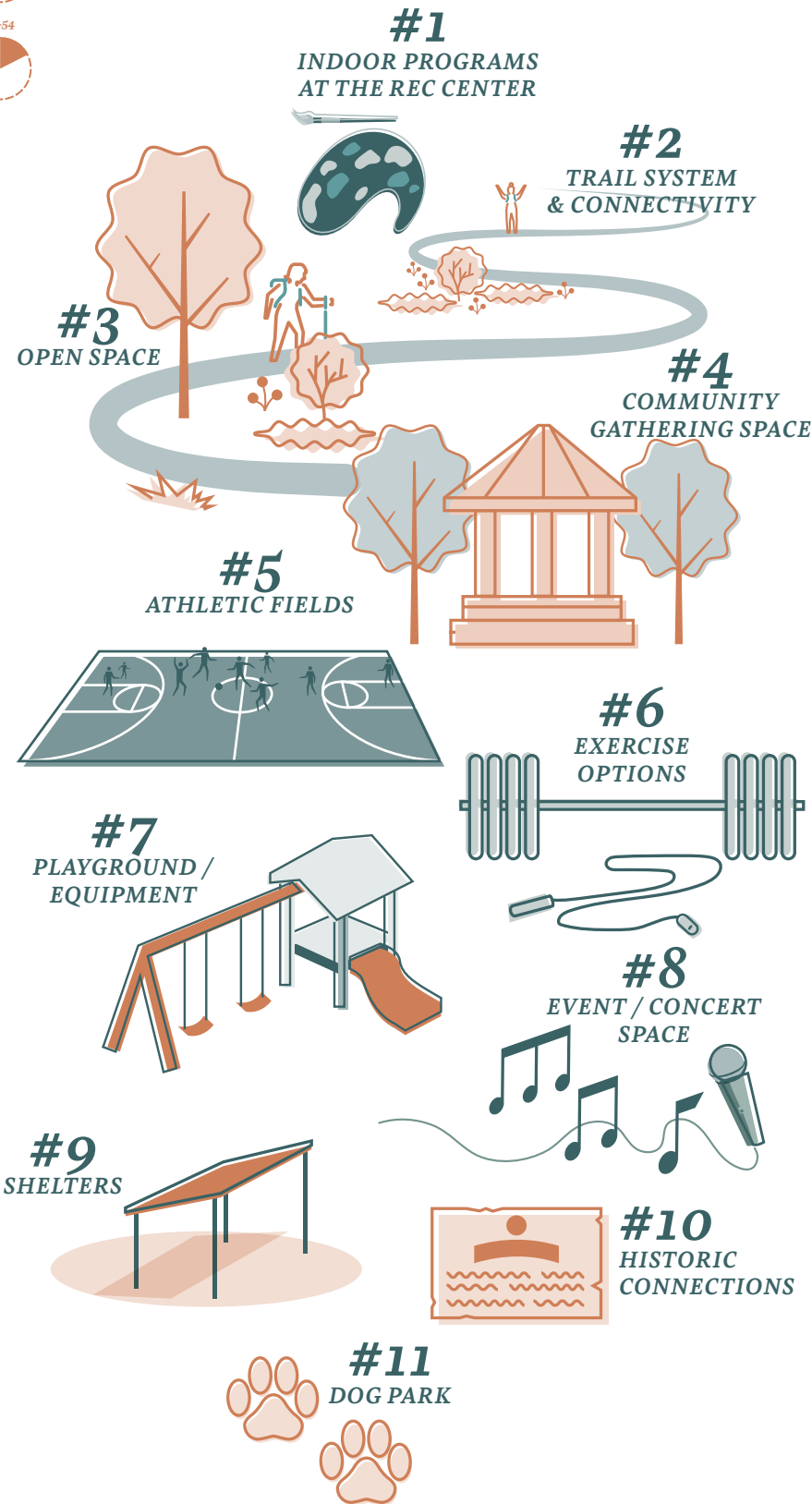
Where do you live?



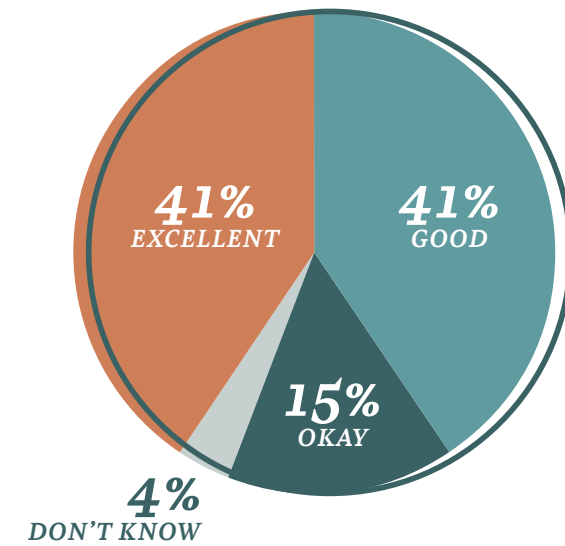
Which age groups reside in your household?



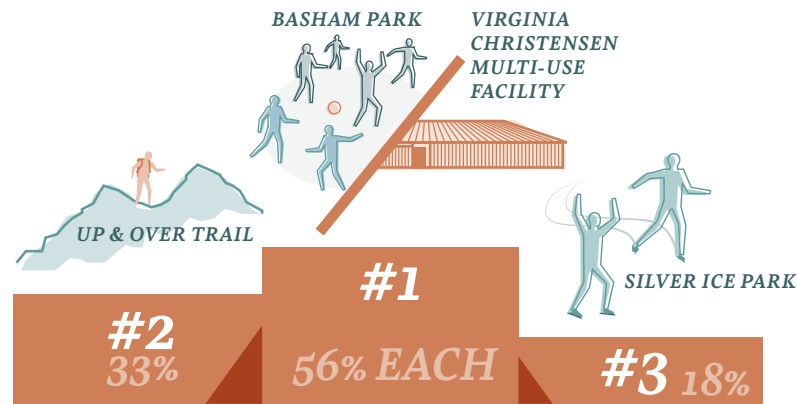
We asked you to prioritize your parks and recreation amenities—here are the results



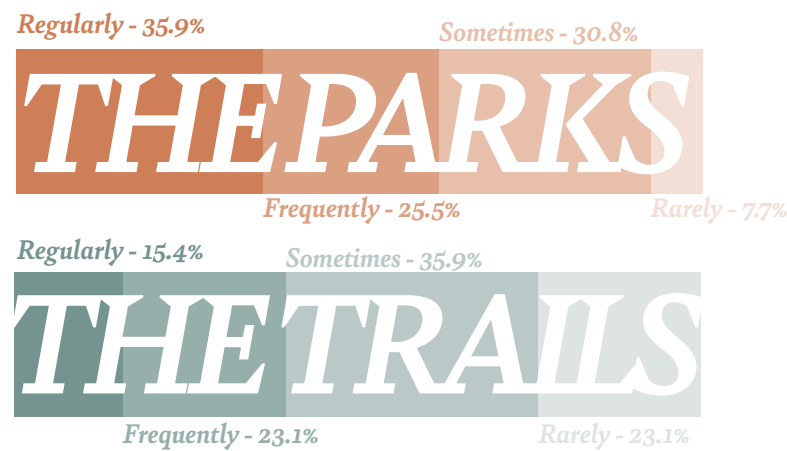
How would you rank general upkeep and maintenance?



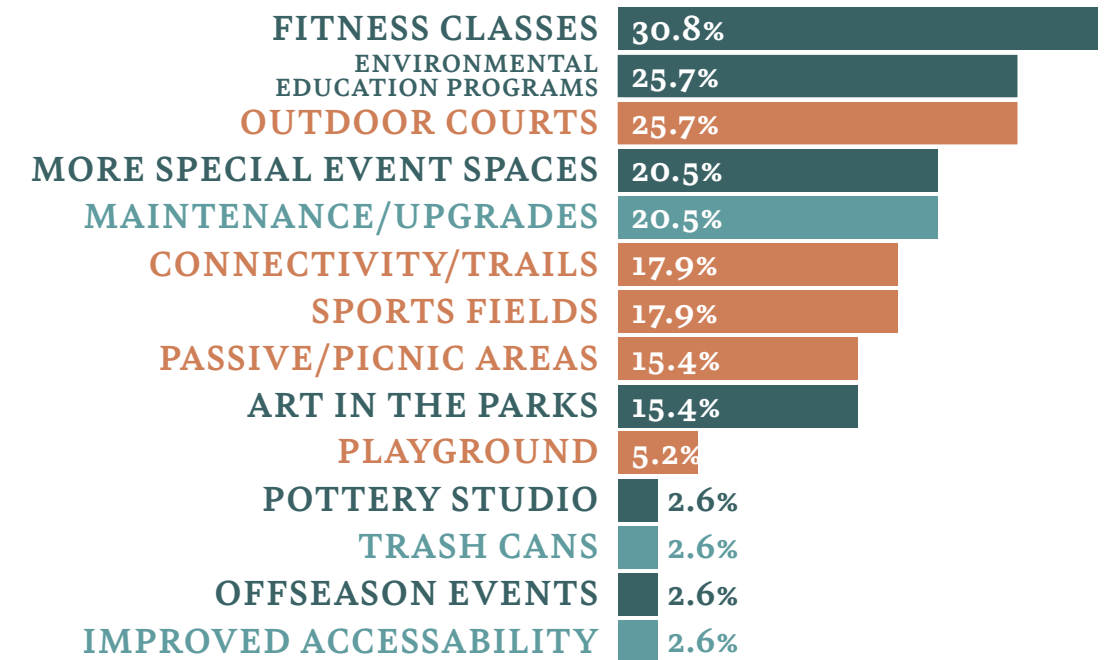
Which park, trail, or facility do you visit the most?



How frequently do you visit/use....



What do you think is missing from most of the existing parks?



Respondents were able to select multiple options or enter their own

- space
- program
- facilities